

# COVID-19 Neutralizing Antibody test.

 **Fast result** (10 mins)

 **Simple** (no analyzer required)

 **Capillary whole blood** (20 ul)

 **High accuracy and sensitivity**

 **Storage** (2 - 30 °C)



## What is **BIOMeTRO**

**BIOMeTRO** is an in-vitro diagnostic device manufacturer serving to improve the health and well-being of people around the world.

**BIOMeTRO** was established in 2015, since then we strive to deliver reliable and accountable In-vitro diagnostic product through innovative diagnostic technology.

Our effort for the development of medical IVD device based on proprietary Cathodic Electrochemiluminescence (C-ECL) technology, resulted in better clinical and personal healthcare outcomes globally.

### BM COVID-19 nAb Rapid Gold



25 Tests/1kit



1 Test/1kit

# BM COVID-19 nAb Rapid Gold



**BIOMeTRO**  
DIAGNOSIS PLATFORM TECHNOLOGY

#205 ace techno tower 8, 11, digital-ro 33-gil,  
Guro-gu, Seoul(08380) Korea

TEL : +82-2-839-8236  
FAX : +82-2-839-8237  
www.biometro.net

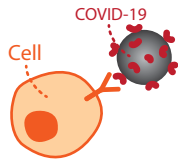
Copyright © Biometro Co.,Ltd. All rights reserved.

**BIOMeTRO**  
www.biometro.net

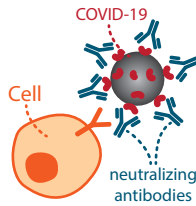
## What are neutralizing antibodies?

When we get a vaccination (vaccine), we put a virus 'antigen' into our body.

This is because our body produces antibodies to fight antigens that enter the body.



Antibodies that neutralize pathogens among antibodies are called 'neutralizing antibodies'.



## Clinical performance

		PRNT		
		Positive	Negative	Total
BIO METRO Covid-19 Neutralizing Antibody	Positive	29	0	29
	Negative	1	40	41
	Total	30	40	70

sensitivity (%) : 96.8 (95 CI : 83.8~99.4)  
 specificity (%) : 100 (95 CI : 91.2~100)  
 Overall (%) : 98.6 (95 CI : 92.44~99.8)

## When is the neutralizing antibody test effective?

COVID - 19  
vaccination



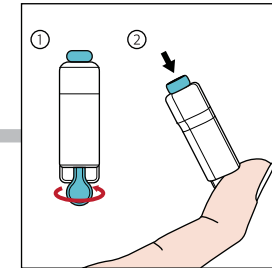
Neutralizing antibody  
test after 2 weeks



Confirmation  
that the vaccine  
has been immunized

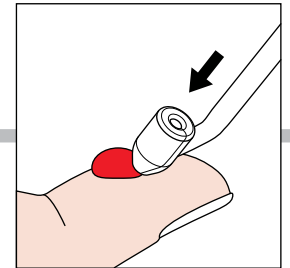


## How to proceed with the test?



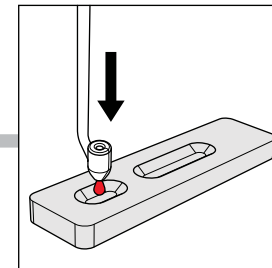
**step 1**

Remove the lancet protector and extract blood like an arrow.



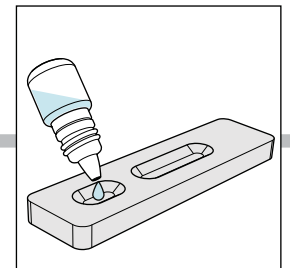
**step 2**

Hold the Mini-Tip horizontally and collect the samples using capillary action.



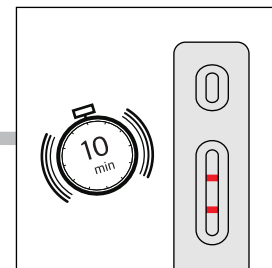
**step 3**

Set the collected sample vertically and dot the sample.



**step 4**

Add 80  $\mu$ L (approximately 3 drops) of sample diluent.



**step 5**

Check the results after 10 minutes. The result after 30 minutes is invalid.

